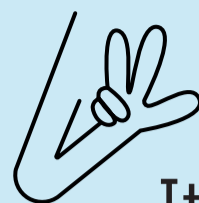
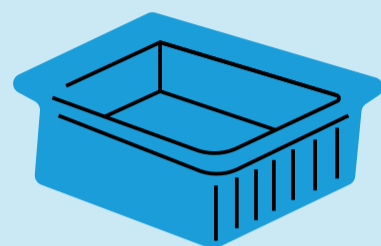
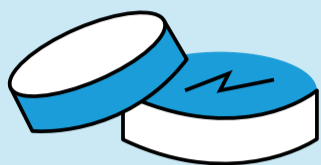


PMD

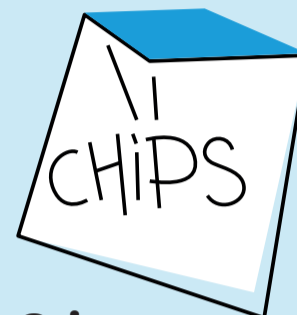


It takes **3 seconds** to sort waste!

Metal and plastic caps



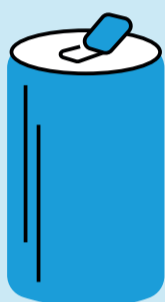
Trays and dishes



Crisp packaging



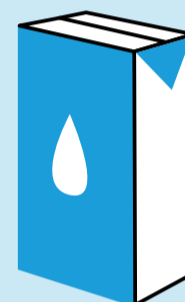
Plastic bottles



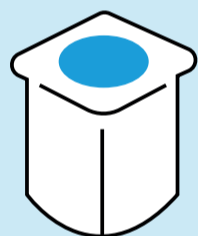
Cans



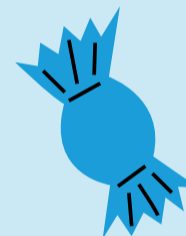
Beverage capsules (coffee, etc.)



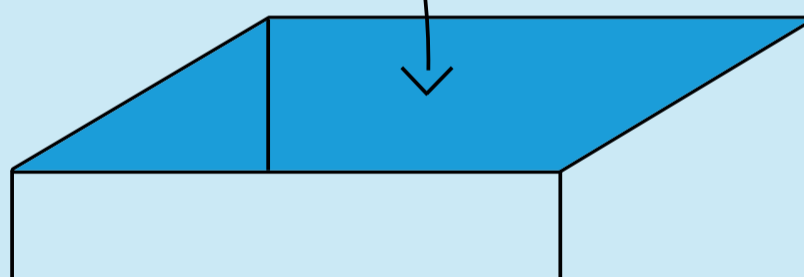
Drink cartons



Yogurt pots



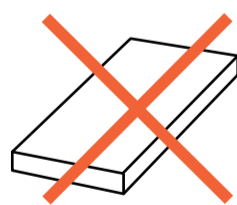
Snack packaging



Errors to avoid



Disposable coffee cups

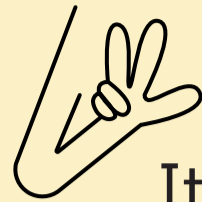


Frigolite, expanded polystyrene

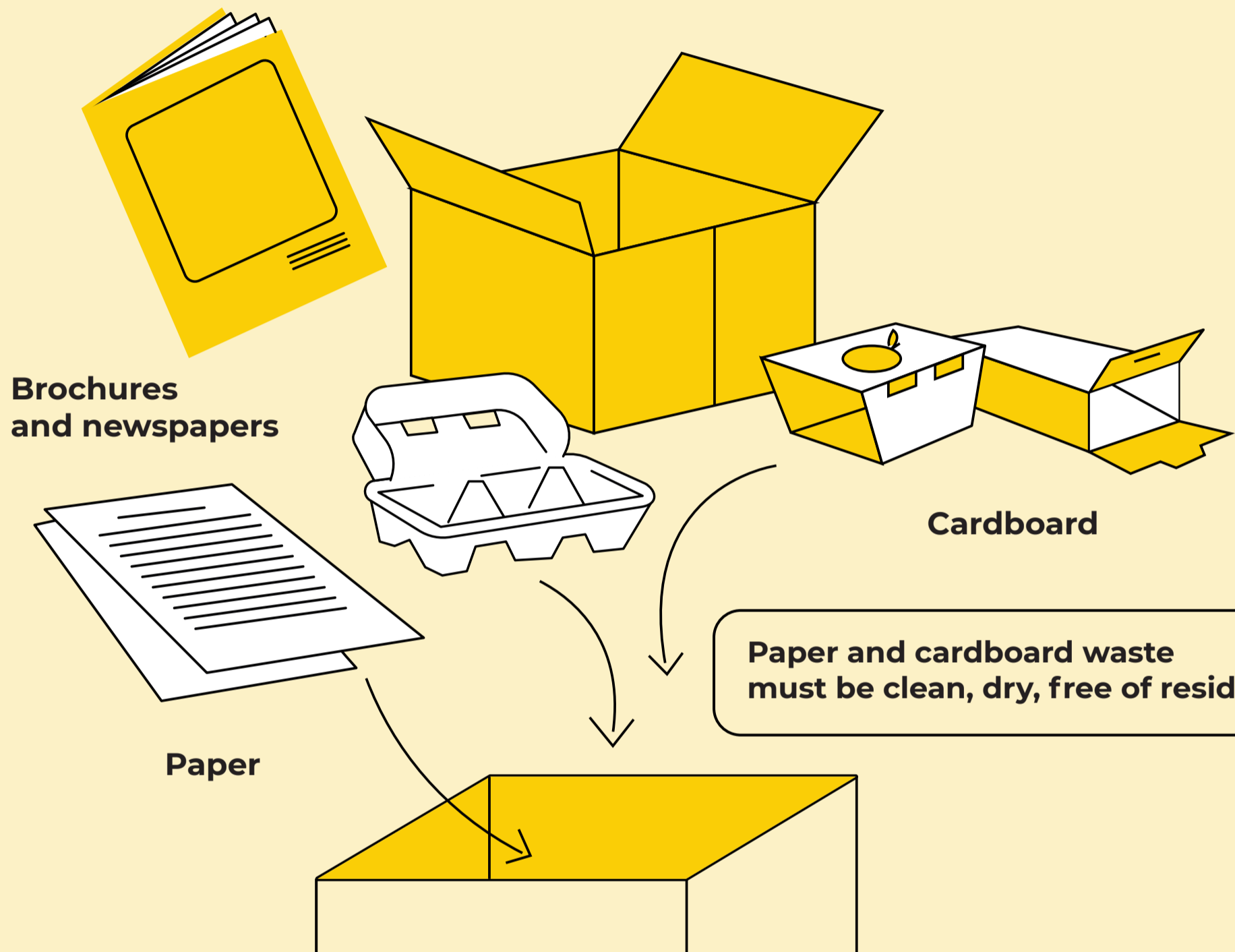


Packaging with mixed material

Paper cardboard



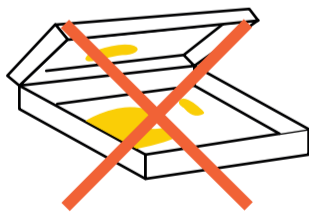
It takes **3 seconds**
to sort waste!



Errors to avoid



Disposable coffee cups



Dirty paper or cardboard

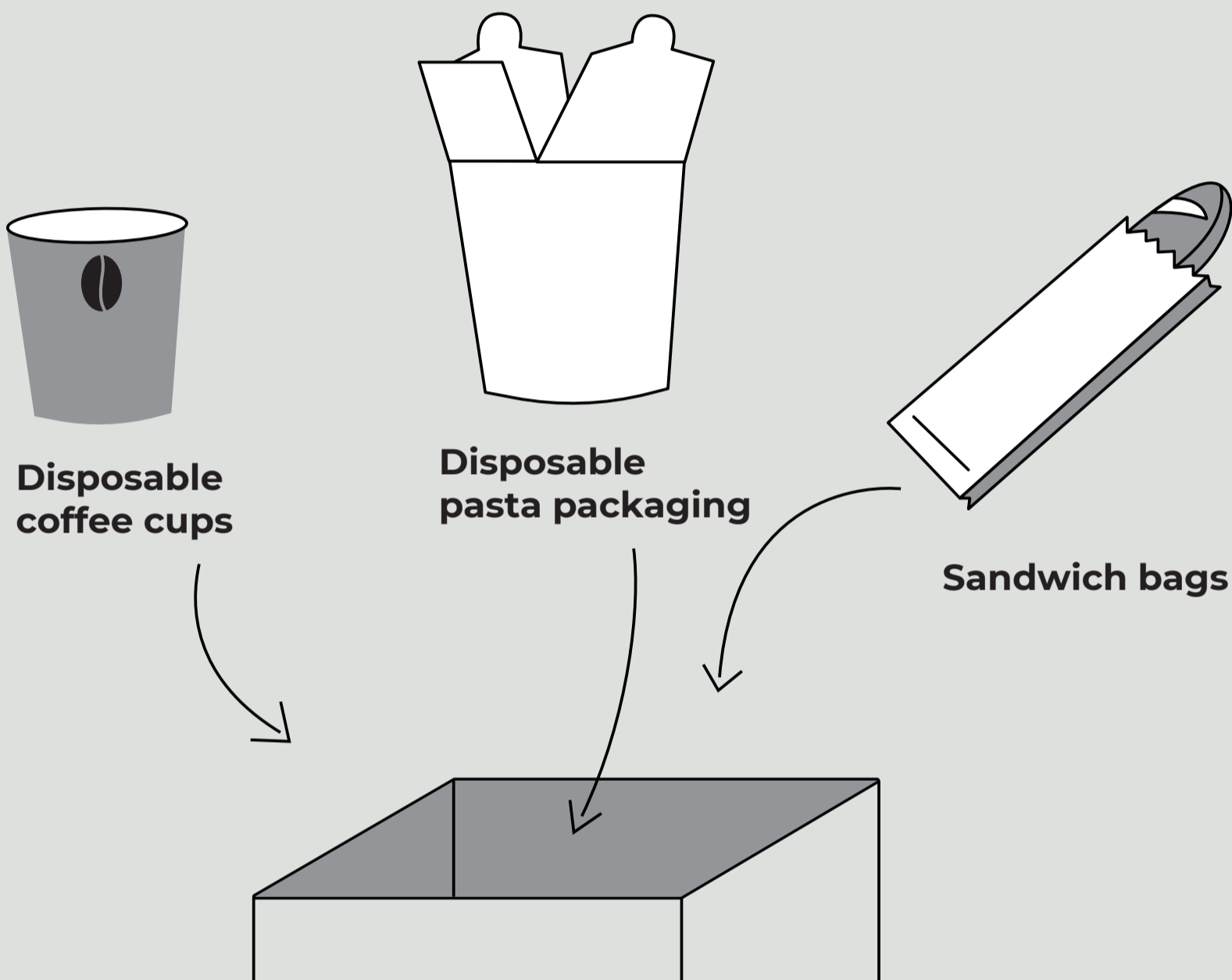


Paper tissues

Household waste (non-recyclable)



It takes **3 seconds** to sort waste!



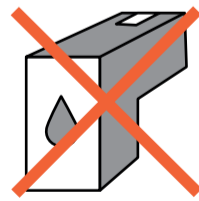
✘ Errors to avoid



Batteries



Light bulbs



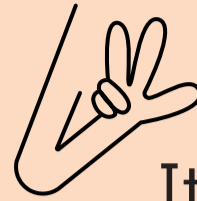
Ink cartridges



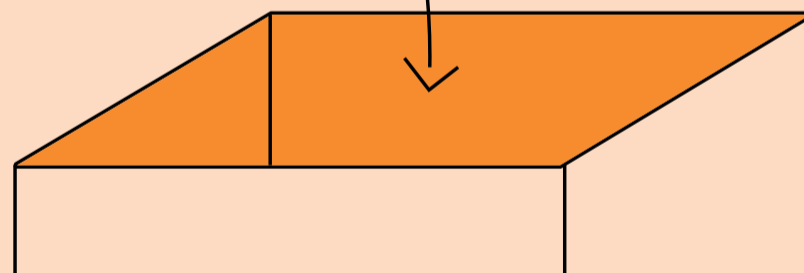
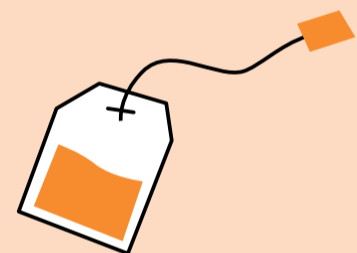
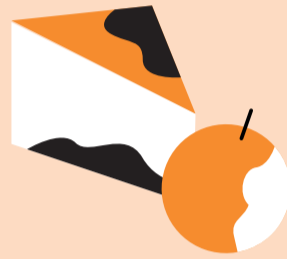
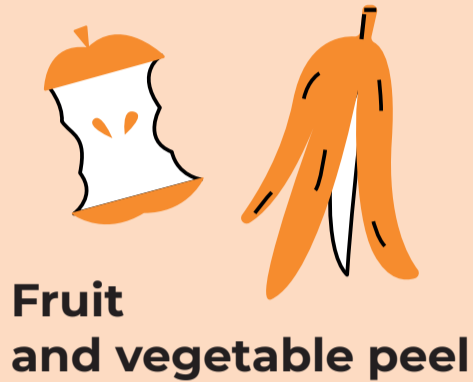
Packaging containing toxic and/or corrosive substances

Visit uclouvain.be/dechets-tri to find out how to dispose of glass items, ink cartridges and bulky items.

Food waste



It takes **3 seconds** to sort waste!



✘ Errors to avoid



Eggshell



Bones, carcasses and fish bones



Green, garden waste



Diapers, nappies